



www.bebka.org.tr

Yeni Yalova Yolu 4.Km Buttım İş Merkezi Buttım
Plaza Kat 6 16250 Osmangazi/Bursa TURKEY

Phone 0224 211 13 27 • **Fax** 0224 211 13 29

TR41 KEY FIGURES '13

01

GEOGRAPHY

04

02

POPULATION

06

03

DEMOGRAPHY

08

04

EDUCATION

14

05

HEALTH

16

06

ECONOMY

18

07

FOREIGN TRADE

20

08

BANKING

22

09

EMPLOYMENT AND
LABOUR FORCE

24

10

R&D AND
INNOVATION

26

11

ENVIRONMENT

28

12

AGRICULTURE

30

13

ENERGY

32

14

TRANSPORTATION AND
COMMUNICATION

34

15

CULTURE

36

16

TOURISM

38

17

SPORTS

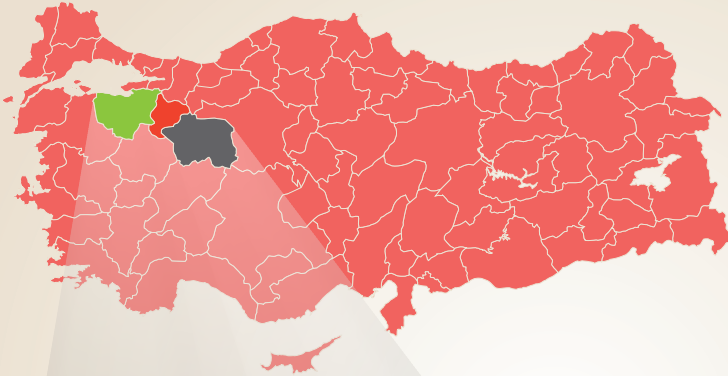
40

REFERENCE-
ABBREVIATION-
DEFINITION

42

1. GEOGRAPHY

TURKEY



AREA



TR41 Region, that is one of the 26 regions of Level 2 Statistical Regional Units in Turkey, is consist of three provinces namely Bursa, Eskişehir and Bilecik.

Geographically, these provinces are not altogether in the same geographical region: Bursa and Bilecik provinces are in Marmara Region where Eskişehir is in Central Anatolia Region. Depending on the fact that the provinces are located on a transition part of the geographical regions and they have varied geographical features, the climate within the region is diversified.

The total area (excluding lakes) of Bursa, Eskişehir and Bilecik provinces corresponds to 3,71% of total area of Turkey. The largest area among TR41 provinces belongs to Eskişehir that has 48,46% of the TR41 Region total area (excluding lakes) . Following Eskişehir, Bursa has 36,48% and Bilecik has 15,06% of the total area of the region.

TR41

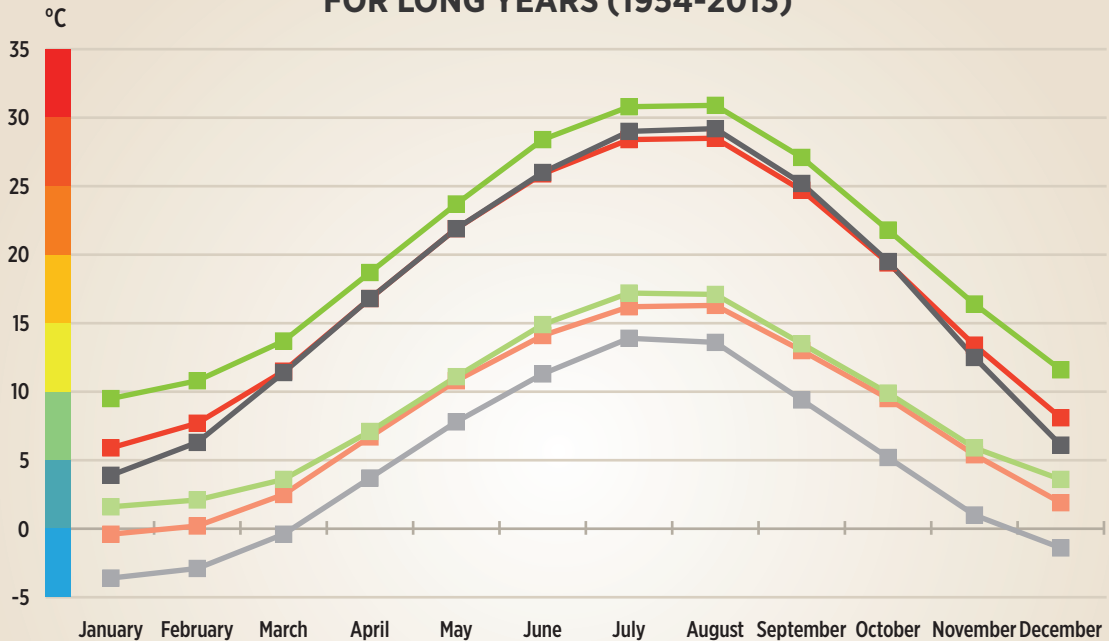
KEY FIGURES

2013

Source: TÜİK data.
Area excluding lakes.

1. GEOGRAPHY

AVERAGE MINIMUM AND MAXIMUM TEMPERATURE FOR LONG YEARS (1954-2013)

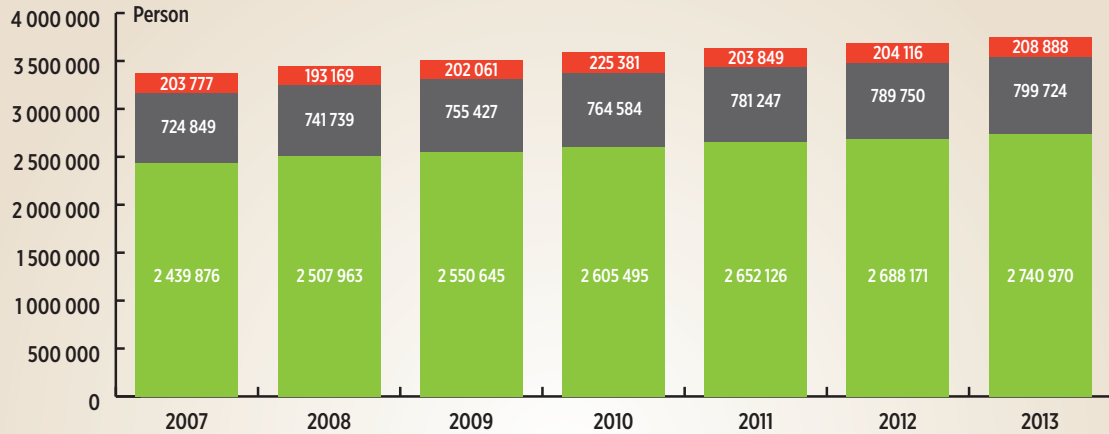


The average minimum temperature for all the provinces of TR41 Bursa Eskişehir Bilecik for years 1954-2013 is in January where the average maximum temperature is in August. The lowest of average minimum temperatures of three provinces belong to Eskişehir where the highest average maximum temperature belongs to Bursa.

- Bursa Average Maximum Temperature
- Bursa Average Minimum Temperature
- Eskişehir Average Maximum Temperature
- Eskişehir Average Minimum Temperature
- Bilecik Average Maximum Temperature
- Bilecik Average Minimum Temperature

2. POPULATION

TR41 REGION POPULATION OF THE PROVINCES (2007-2013)



6

By year 2013, 3,58% of total population of Turkey is in Bursa, 1,04% is in Eskişehir and 0,27% is in Bilecik and in total 4,89% of the total population is living in TR41 Region.

49,95% of Bursa, 50,08% of Eskişehir, 47,92% of Bilecik population and in total 49,86% of the population of TR41 Region is consist of women.

Since the year 2007, in six years, the population of TR41 region has increased by 67 545 persons and between years 2012-2013, the highest increase in the growth rate of the population belongs to Bilecik province.

In 2012 (before the law with number 6360 related to Greater Municipalities), regarding the localities of the population, where 22,72% of the total population in Turkey was living in the small town and villages, 10,65% of Bursa population, 9,99% of Eskişehir population 24,09% of Bilecik population and in total 11,25% of TR41 Region's population used to live in the small town and villages.

■ Bursa ■ Eskişehir ■ Bilecik

Population	2011	2012	2013
Bursa	2 652 126	2 688 171	2 740 970
Eskişehir	781 247	789 750	799 724
Bilecik	203 849	204 116	208 888
TR41	3 637 222	3 682 037	3 749 582
Turkey	74 724 269	75 627 384	76 667 864

TR41

KEY FIGURES

2013

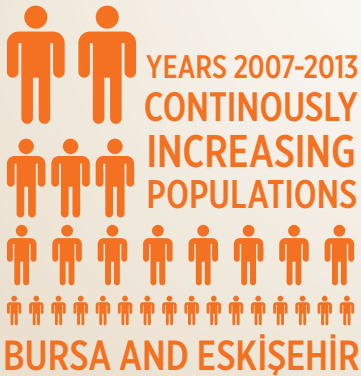
Source: TÜİK-ADNKS

2. POPULATION

TR41 POPULATION
GROWTH
RATE IS



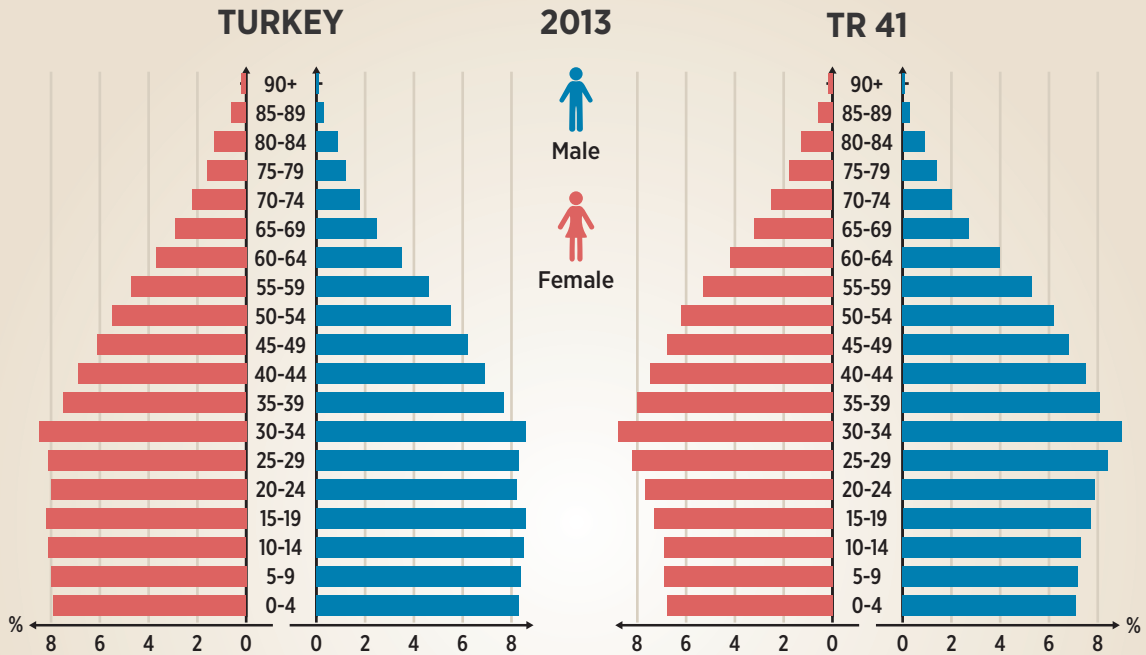
TR41 POPULATION IS



THE GREATEST SHARE IN
POPULATION OF TR41 IS



3. DEMOGRAPHY



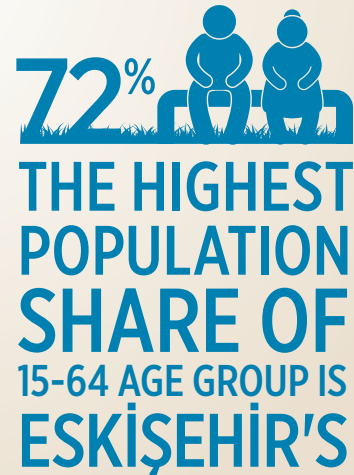
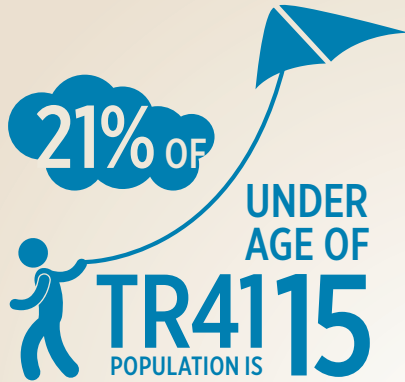
The demographic structure of the population of Turkey shows that 33% of Turkish population is under 20 years old. This percentage is 29,75% for Bursa, 25,37% for Eskişehir and 26,57% for Bilecik.

Regarding the share of population aged 65 years and over, 7,68% of the total population of Turkey is at the age of 65 and over where this figure is 7,86% for Bursa, 10,01% for Eskişehir and 10,37% for Bilecik. For all the provinces of TR41, these figures are higher than that of Turkey.

Among the provinces of TR41 Region, Bursa is the province that has the highest proportion of population below the age of 20 and also has the lowest population aged 65 and over. Regarding the elderly population, the highest proportion of population aged 65 and over belongs to Bilecik province.

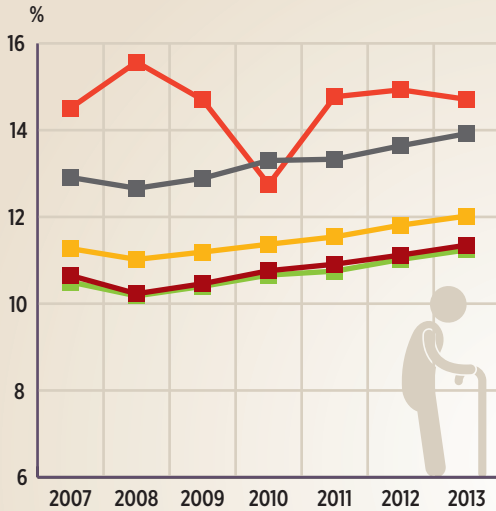
The median age for year 2013 is 32,6 for Bursa, 34,6 for Eskişehir and 33 for Bilecik where it is 30,4 for Turkey.

3. DEMOGRAPHY

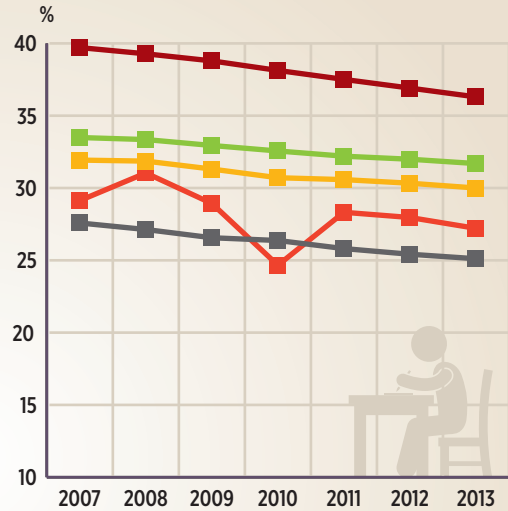


3. DEMOGRAPHY

OLD AGE DEPENDENCY RATIO



YOUNG AGE DEPENDENCY RATIO



■ Bilecik
 ■ Eskişehir
 ■ Bursa
 ■ TR41
 ■ Turkey

The age structure of a population is a factor that affects key socioeconomic issues. Old and young dependency ratios represent how much the population aged below 15 years and above 65 years are dependent on working age population. According to these indicators, the investments like investment to schools for young people and health for elderly people become clear.

Old age dependency ratio increased between years 2007-2013 and the highest old dependency age is for Bilecik for year 2013.

Young dependency ratio had decreasing trend for years 2007-2013 and for 2013 it is the highest for Bursa.

TR41

KEY FIGURES

2013

Source: TÜİK-ADNKS
and BEBKA calculations

3. DEMOGRAPHY

THE HIGHEST OLD AGE DEPENDENCY IS BİLECİK'S

14,71%



THE HIGHEST YOUNG AGE DEPENDENCY

IS BURSA'S

31,69%



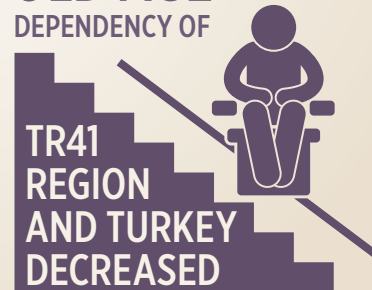
2008-2013
YOUNG AGE

DEPENDENCY OF
TR41 REGION AND
TURKEY INCREASED



2008-2013
OLD AGE
DEPENDENCY OF

TR41
REGION
AND TURKEY
DECREASED



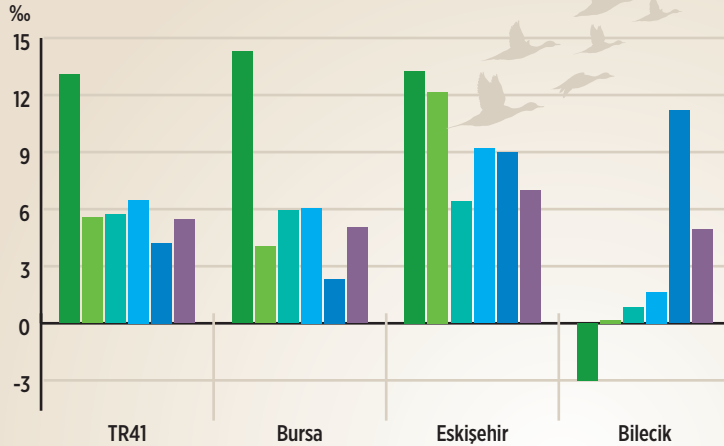
TR41

KEY FIGURES

2013

3. DEMOGRAPHY

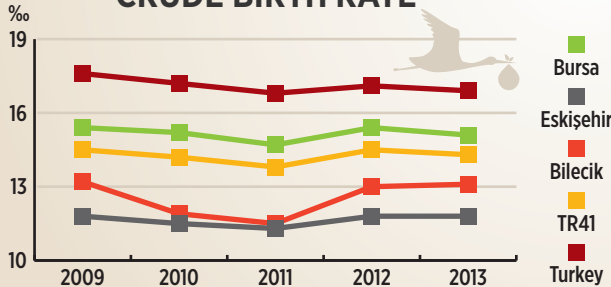
NET MIGRATION RATE



Net migration rate is the highest for TR41 region and its provinces for 2007-2008 period and for the provinces it did not fall below 4 per thousand. Regarding the period 2012-2013, the highest net migration rate belongs to Eskişehir and the lowest is Bilecik's.

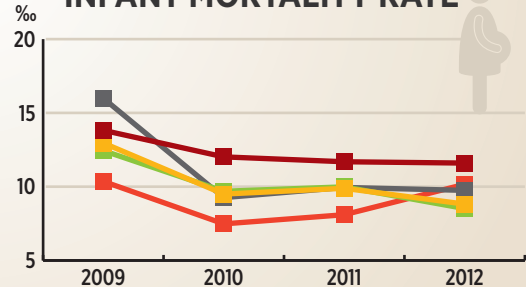


CRUDE BIRTH RATE



Crude birth rate, that is the number of births per thousand people for whole region is lower than that of Turkey. Crude birth rate has been the lowest for Eskişehir among TR41 provinces.

INFANT MORTALITY RATE



The number of infant deaths per thousand live births, regarding years 2009-2012, is the highest for Eskişehir and it decreased after year 2010 for all provinces.

3. DEMOGRAPHY

**NET
MIGRATION**



RATE OF REGION

5,45‰

**THE HIGHEST
NET MIGRATION**



ESKİŞEHİR'S

**THE HIGHEST
CRUDE
BIRTH
RATE** **15,1‰**
IS BURSA'S



**2012 THE LOWEST
INFANT MORTALITY
RATE IS
BURSA'S** **8,52‰**



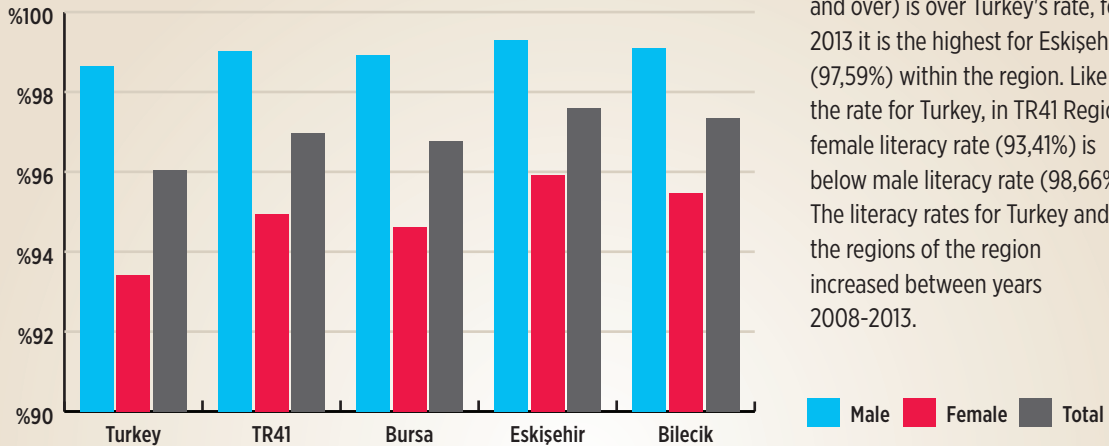
TR41

KEY FIGURES

2013

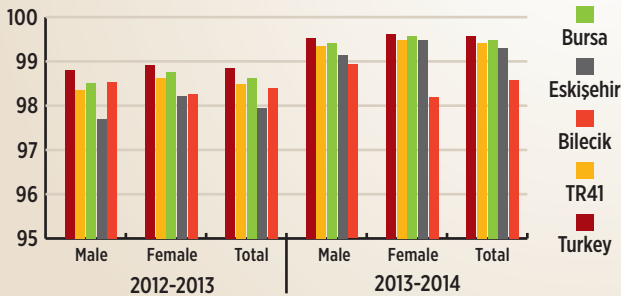
4. EDUCATION

2013 LITERACY RATE (AGE 6 AND OVER)



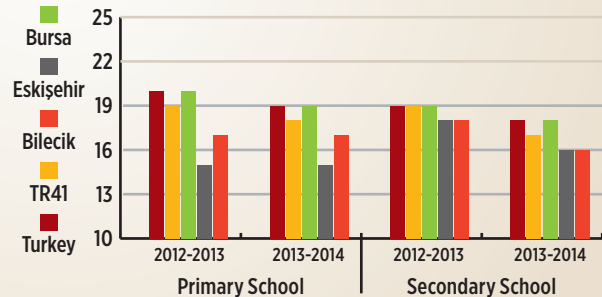
14

PRIMARY SCHOOL NET ENROLMENT RATE (%)



In 2013-2014 for TR41, secondary school net enrolment ratio (96,26%) is lower than primary school net enrolment ratio (99,41%). The highest female primary school net enrolment rate is Bursa's (99,58%).

NUMBER OF STUDENTS PER TEACHER



In number of students per teacher, in the education year of 2013-2014, the lowest number of students per teacher for primary schools is Eskişehir's (15) and for secondary schools it is Eskişehir's and Bilecik's (16).


TR41

KEY FIGURES


2013



Source: TÜİK Regional Statistics and BEBKA calculations, MEB Formal Education Statistics

4. EDUCATION

TR41'S
LITERACY
RATE 
IS OVER TURKEY'S
FOR 2013
96,98%

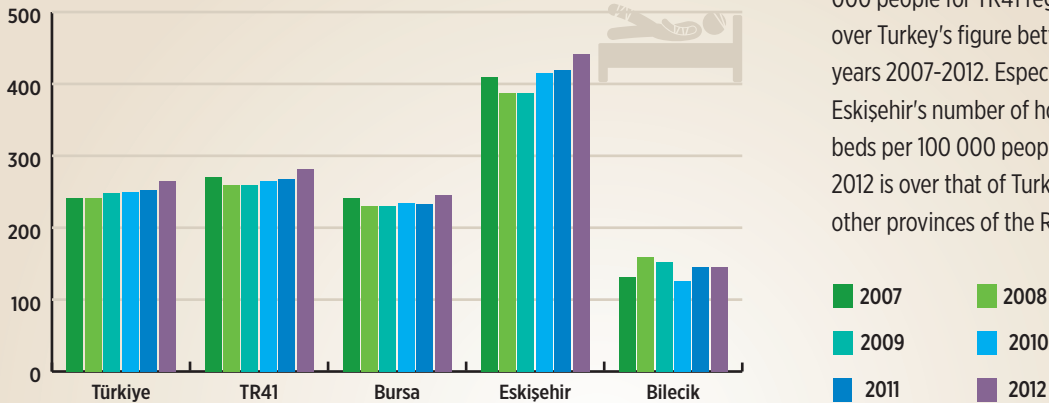
THE NUMBER OF
PEOPLE HAVING
MINIMUM HIGHER
EDUCATION
DEGREE
PER THOUSAND PEOPLE
ESKİŞEHİR
IS 2ND 
IN 81
PROVINCES
164

THE HIGHEST
PRIMARY SCHOOL
NET
ENROLMENT
RATIO

BURSA
99,49%
THE
HIGHEST SECONDARY SCHOOL
NET ENROLMENT RATIO
ESKİŞEHİR 96,86%

THE LOWEST NUMBER OF
STUDENTS
PER TEACHER
FOR PRIMARY SCHOOLS
IS **ESKİŞEHİR'S**
  **15**  

5. HEALTH

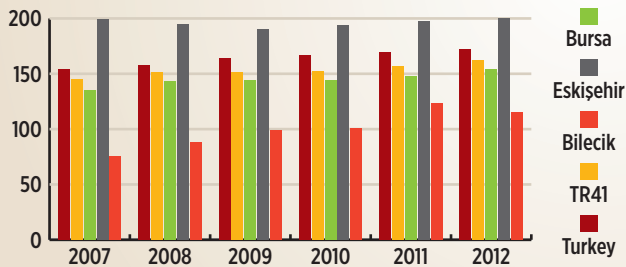
NUMBER OF HOSPITAL BEDS PER 100 000 PEOPLE



Number of hospital beds per 100 000 people for TR41 region is over Turkey's figure between years 2007-2012. Especially, Eskişehir's number of hospital beds per 100 000 people for year 2012 is over that of Turkey and other provinces of the Region.

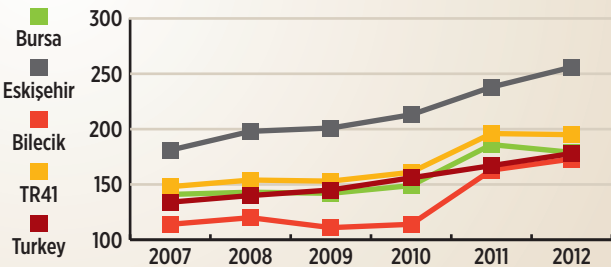
16

NUMBER OF PHYSICIANS PER 100 000 PEOPLE



The indicator of number of physicians per 100 000 people for TR41 region is lower than that of Turkey. The highest indicator in the region is Eskişehir's with 200 physicians per 100 000 followed by Bursa with 154 and by Bilecik with 115 physicians.

NUMBER OF NURSES PER 100 000 PEOPLE



Number of nurses per 100 000 people, in 2012, is 179 for Bursa, 256 for Eskişehir and 173 for Bilecik. For year 2012, number of independent pharmacies per 100 000 people is 39 for Eskişehir, 29 for Bursa and 25 for Bilecik.

TR41

KEY FIGURES

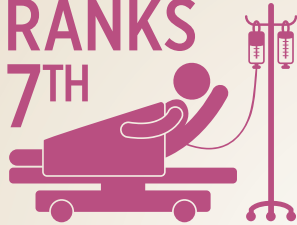
2013

Source: TÜİK, TITCK and BEBKA calculations

YEAR 2012

NUMBER OF HOSPITAL BEDS
PER 100 000 PEOPLE

RANKS
7TH



IN TURKEY ESKİŞEHİR

YEAR 2012

NUMBER OF
PHYSICIANS AND
SPECIALISED
PHYSICIANS
PER 100 000 PEOPLE



IS IN TOP 10 IN TURKEY

ESKİŞEHİR

2007-2012 TR41
NUMBER OF NURSES
PER 100 000 PEOPLE

RANKS
11.



AMONG REGIONS

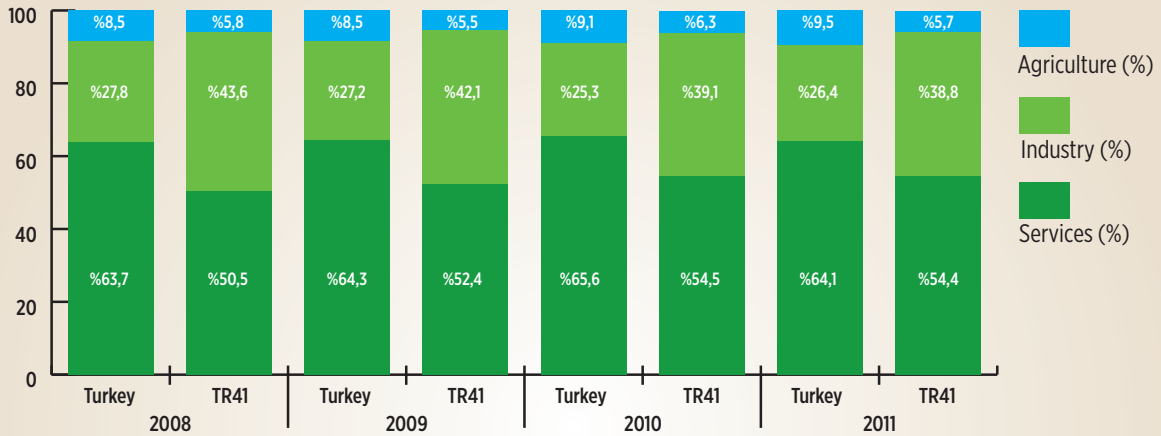
YEAR 2012 TR41



NUMBER OF
PHYSICIANS
PER 100 000 PEOPLE

RANKS 4TH

SECTORAL SHARE OF GROSS VALUE ADDED AT CURRENT PRICES (%)

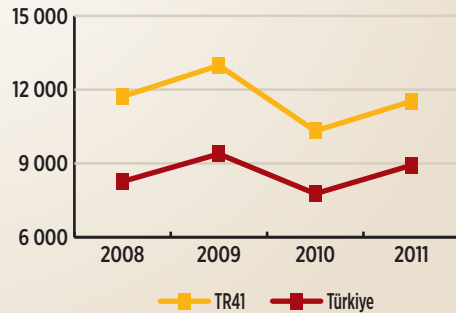


In 2011, by 73 528 million TL TR41 Region has the 6,39% of the Gross Value Added (GVA) of Turkey. With its GVA, TR41 Region is on the 4th rank after regions TR10 İstanbul (with share of 27,2%), TR51 Ankara (with share of 8,6%) and TR31 İzmir (with share of 6,6%).

Regarding the sectoral distribution, by 2011, TR41 Region provides the 9,5% of Industry GVA of Turkey, 3,94% of Agriculture GVA of Turkey and 5,37% of Services GVA of Turkey.

For years 2008-2011, Gross Value Added per Capita of TR41 Region, that ranks 4th among regions, has been above the figure of Turkey.

GROSS VALUE ADDED (GVA) PER CAPITA (\$)



YEAR 2011 TR41
REGION



\$ 11 528

YEAR 2011
SHARE OF INDUSTRY
IN GVA OF



TR41 REGION
IS 39,8%

2011 SHARE OF
TR41 REGION'S

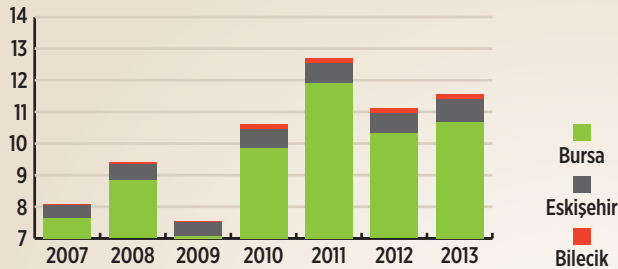


YEAR 2011
TR41 REGION



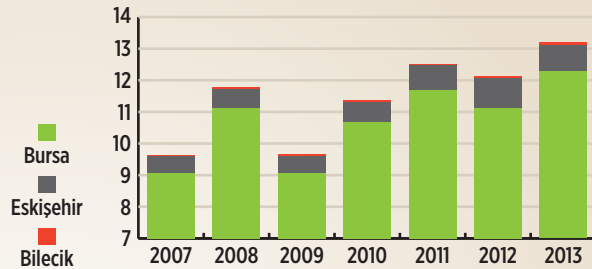
7. FOREIGN TRADE

IMPORT OF TR41



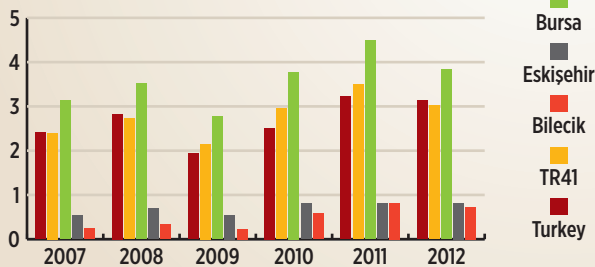
By year 2013, where TR41 Region export is 8,70% of Turkey's export, the Region has 4,6% of Turkey's total import. 92% of both export and import of TR41 Region is by province of Bursa.

EXPORT OF TR41



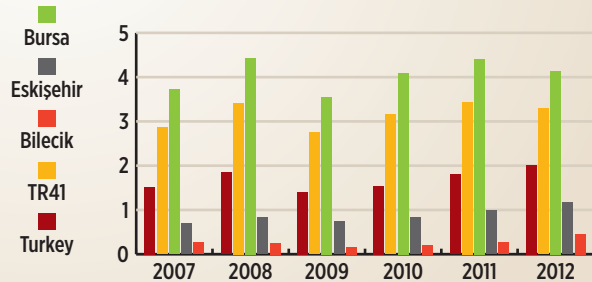
Between years 2007-2013, only in 2011 balance of foreign trade is negative in the Region. In 2013 Bilecik's balance of foreign trade is negative.

IMPORT PER CAPITA (THOUSAND USD)



For years 2007-2013, export per capita of TR41 Region is above Turkey's value and import per capita of TR41 Region is above Turkey for years 2008 and 2012-2013.

EXPORT PER CAPITA (THOUSAND USD)



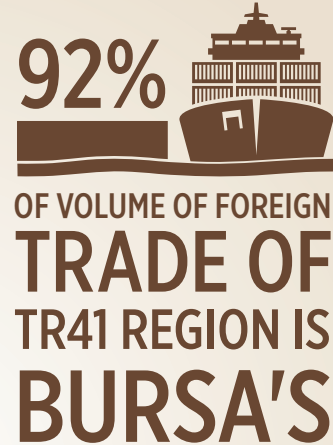
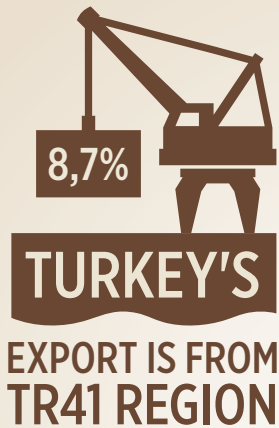
TR41

KEY FIGURES

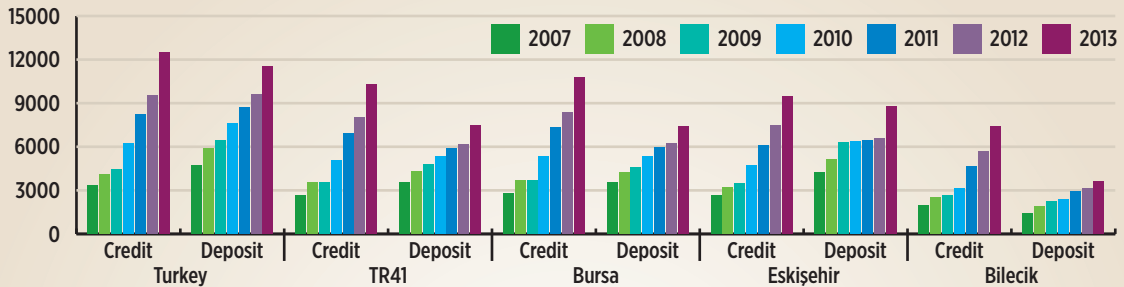
2013

Source: TÜİK foreign trade data and BEBKA calculations

7. FOREIGN TRADE



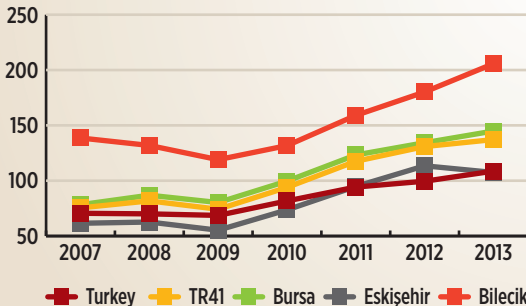
BANK CREDIT AND DEPOSIT PER CAPITA (TL) 2007-2013



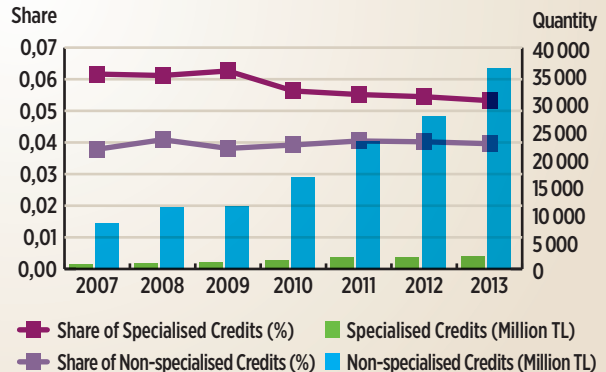
Related to banking sector, regarding bank deposits and credits, by year 2013, TR41 Region has 3,19% of the country's deposits with 28 104 million TL and 4,02% of the bank credits with 38 543 million TL.

22

CREDIT/DEPOSIT RATIO (%) 2007-2013



TR41 REGION SPECIALISED CREDITS AND NON-SPECIALISED CREDITS 2007-2013



25,75% of the deposits is foreign exchange deposits and 5,84% of bank credits is specialised credits (agricultural, real estate, vocational, maritime and tourism credits etc.).

Bursa has 76% of the Region's bank credits and 72% of the deposits. In Eskişehir, there is 20% of the Region's bank credits and 25% of the deposits.

YEAR 2013
THE HIGHEST BANK



CREDIT PER CAPITA
IS BURSA'S
10 741 TL



YEAR 2013
THE HIGHEST
BANK DEPOSIT
PER CAPITA IS
ESKİŞEHİR'S
8 794 TL

YEARS 2007-2013
THE LOWEST
CREDIT/DEPOSIT RATIO IS



ESKİŞEHİR'S

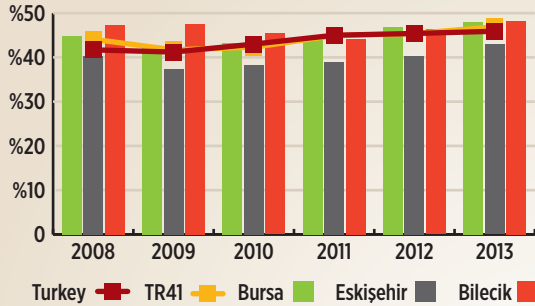
2007-2013
TR41 REGION

BANK
CREDITS
QUADRUPLED



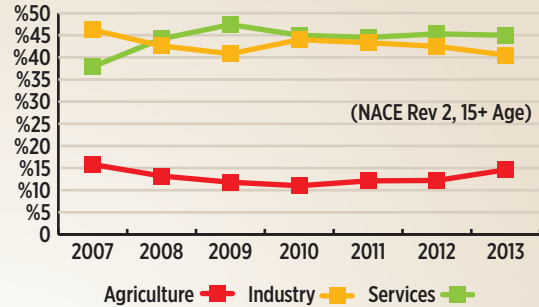
9. EMPLOYMENT AND LABOUR FORCE

EMPLOYMENT RATE (AGE 15+)



Between years 2008-2013, the employment rate decreased only in year 2009, which is the crisis year. 2013 employment rate is 45,9% for Turkey, 46,9% for TR41, 48% for Bursa, 42,9% for Eskişehir and 48,2% for Bilecik.

TR41 RATE OF EMPLOYED PERSONS BY ECONOMIC ACTIVITY



Regarding the distribution of employment by sectors, in years 2007-2013, the employment rate is not below 40% for both industry and services where it is not under 10% for agriculture.

LABOUR FORCE PARTICIPATION RATE (AGE OF 15 AND OVER, %)

	Turkey	TR41	Bursa	Eskişehir	Bilecik
2008	11,0	10,3	10,8	9,9	8,2
2009	14,0	13,9	14,7	15,2	8,5
2010	11,9	10,1	10,5	10,5	7,7
2011	9,8	7,6	7,5	8,9	6,2
2012	9,2	7,4	7,1	8,4	6,4
2013	9,7	7,0	6,6	8,5	6,5

UNEMPLOYMENT RATE (AGE OF 15 AND OVER, %)

	Turkey	TR41	Bursa	Eskişehir	Bilecik
2008	46,9	49,2	50,2	44,8	51,5
2009	47,9	48,4	49,4	44,1	52,0
2010	48,8	47,1	48,4	42,7	49,2
2011	49,9	48,6	50,5	42,2	50,5
2012	50,0	49,0	50,4	44,0	49,5
2013	50,8	50,4	51,4	46,9	51,6

The unemployment rate for TR41 Region is 7% and non-agricultural unemployment rate, which is 8,1%, is below Turkey's rate. Between years 2008-2010, the labour force participation rate increased and it is 50,4% for year 2013.

9. EMPLOYMENT AND LABOUR FORCE

YEAR 2013
THE HIGHEST
EMPLOYMENT
RATE IS

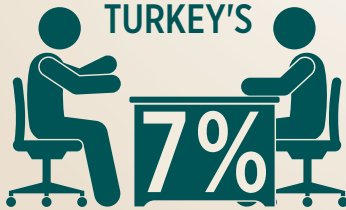


BILECIK'S
48,2%

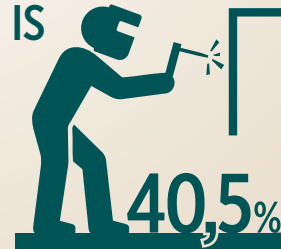
YEAR 2013
THE HIGHEST
LABOUR FORCE
PARTICIPATION
RATE IS BILECIK'S



YEAR 2013 TR41 REGION
UNEMPLOYMENT
RATE IS BELOW
TURKEY'S



YEAR 2013 SHARE OF
INDUSTRY IN
EMPLOYMENT
OF THE REGION
IS



ACTIVE R&D CENTRES

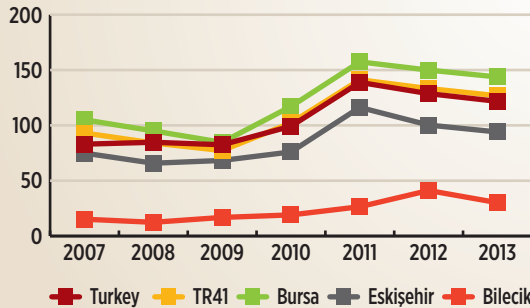
Sector	TR41	Bursa	Eskişehir	Bilecik
Automotive Supply Industry	17	17	-	-
Machinery and Equipment	4	2	2	-
Automotiv	2	2	-	-
Aviation	2	-	2	-
Electric-electronic	1	1	-	-
Textile	1	1	-	-
Consumer durables	1	-	1	-
Glass and ceramics	1	-	-	1
Air Conditioning	1	-	-	1
Total	30	23	5	2

TR41 Region, by June 2014, has 30 R&D centres of Turkey's total 159 R&D centres. These centres work in 9 sectors in the region.

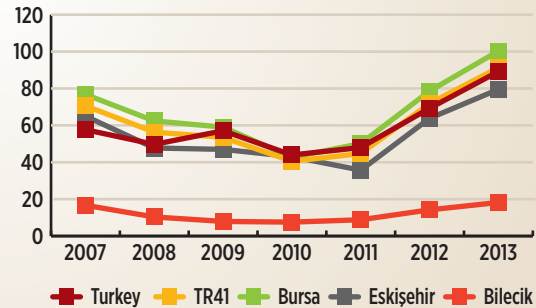
Bursa stands out with its 23 R&D centres and Bilecik hosts R&D centres in the sectors of glass and ceramics as well as air conditioning.

In 2013, 6,7% of R&D expenditures of Turkey is made by TR41 Region.

NUMBER OF TRADEMARK APPLICATIONS PER HUNDRED THOUSAND PERSONS




NUMBER OF TRADEMARK REGISTRATIONS PER HUNDRED THOUSAND PERSONS



In year 2013, in Turkey, 8,55% of patent applications, 5,10% of trademark applications, 9,03% of industrial design applications, 9,12% of utility model applications are from TR41 Region and mostly from Bursa. Bursa is followed by Eskişehir in the Region. The numbers of patent and industrial design applications increased in both Bursa and Eskişehir where the number of utility model applications increased in Bursa. The numbers of applications and registrations of industrial property per 100 000 people for TR41 Region are above the figures for Turkey.

19% OF
TURKEY'S
ACTIVE
R&D 
CENTRES
IS IN TR41 REGION

9% 
OF INDUSTRIAL
DESIGN AND
UTILITY MODEL
APPLICATIONS
ARE FROM
TR41 REGION

IN YEAR 2013
IN 81 PROVINCES
BURSA RANKS
3RD 
WITH
316
PATENT APPLICATIONS

IN YEAR 2013
IN 81 PROVINCES
BURSA RANKS
4TH
WITH
TRADEMARK
APPLICATIONS

3940

11. ENVIRONMENT

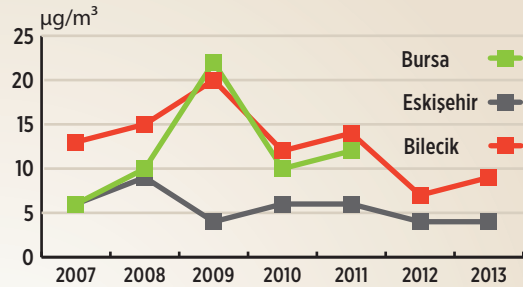
PROPORTION OF WASTE DISPOSED OF IN SANITARY LANDFILL AREAS (%)

	Turkey	TR41	Bursa	Eskişehir	Bilecik
2008	44,94	48,40	68,16	0,00	0,00
2010	54,39	69,70	70,64	85,29	0,00
2012	59,91	81,53	88,41	84,07	0,00

Regarding waste management, in waste disposal, proportion of waste disposed of in sanitary landfill areas is 88,41% for Eskişehir and 84,07% for Bursa that are both above that proportion of Turkey.

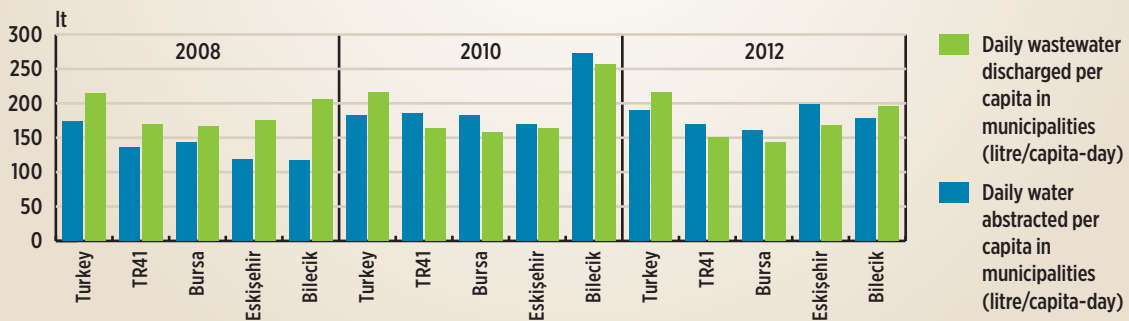
4,9% of Turkey's forest area is in TR41 Region. 46,5% of Bursa, 25,4% of Eskişehir and 53,1% of Bilecik is covered by forests.

AVERAGE SULPHUR DIOXIDE (SO₂) IN AIR QUALITY MEASUREMENTS



Average values of sulphur dioxide (SO₂) and particulate matter (PM₁₀) in the air have a tendency of decrease in years in the Region's provinces. According to measured values, Eskişehir has the lowest measured air pollution figures.

WASTEWATER DISCHARGED PER CAPITA AND DRINKING WATER ABSTRACTED PER CAPITA



Both amount of wastewater discharged per capita and drinking water abstracted per capita indicators for TR41 Region's provinces are lower than those of Turkey.

TR41

KEY FIGURES

2013

Source: TÜİK data and BEBKA calculations, ÇSB

YEAR 2012
PROPORTION
OF WASTE DISPOSED OF IN
SANITARY LANDFILL
AREAS IS




4,9% OF




TURKEY'S FOREST
AREA IS IN
TR41 REGION

YEAR 2012 THE LOWEST
AMOUNT OF
DRINKING

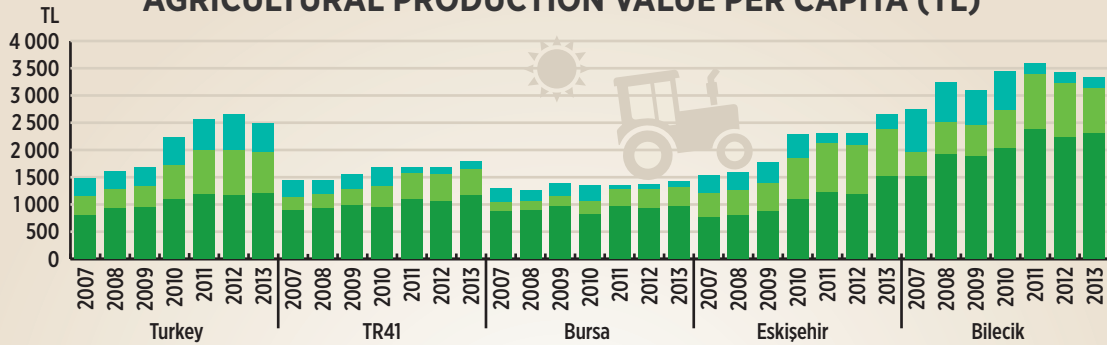

WATER
ABSTRACTED
PER CAPITA IS
BURSA'S **143**
LITRES

IN TR41
THE LOWEST


AVERAGE VALUES
SO₂ AND PM₁₀
IN THE AIR IS
ESKİŞEHİR'S

12. AGRICULTURE

AGRICULTURAL PRODUCTION VALUE PER CAPITA (TL)



Agriculture is carried out in all the provinces of the Region where it is one of the important income generating sectors. By year 2013, 65% of the agricultural production value of the Region consists of crop production. 58% of the agricultural production value of the Region is provided by Bursa. The total agricultural production value is 3 884 771 000 TL for Bursa, 2 118 816 000 TL for Eskişehir and 696 662 000 TL for Bilecik.

- Animal Production Value per Capita (TL)
- Livestock Value per Capita (TL)
- Crop Production Value per Capita (TL)

The provinces other than Bursa stand out in the Region with their agricultural production value per capita due to population effect. Where Bilecik stands out with its crop production value per capita and livestock value per capita, Eskişehir stands out with its animal production value per capita.

NUMBER OF TRACTORS PER THOUSAND HECTARES OF AGRICULTURAL LAND OPERATED*

Regarding tractors that are important part of agricultural mechanisation, the highest number of tractors per thousand hectares of agricultural land operated belongs to Bursa with 213,41 and followed by Bilecik with 95,21 and Eskişehir with 28,56.

	Turkey	TR41	Bursa	Eskişehir	Bilecik
2009	50,28	79,11	169,57	32,42	90,65
2010	51,29	86,80	177,74	36,02	98,38
2011	54,82	86,20	190,77	34,75	99,54
2012	57,25	89,41	193,95	34,34	98,83
2013	58,97	81,91	213,41	28,56	95,21

*In the calculations, land operated has been taken as the total of sown area, fallow land, vegetable and ornamental plants area.

12. AGRICULTURE

THE HIGHEST
AGRICULTURAL
PRODUCTION



VALUE IS BURSA'S
MILLION
3885 TL

THE HIGHEST
CROP PRODUCTION
VALUE PER CAPITA IS



BİLECİK'S
2 303 TL

THE HIGHEST
ANIMAL PRODUCTION
VALUE PER CAPITA IS



266 TL
ESKİŞEHİR'S

THE HIGHEST

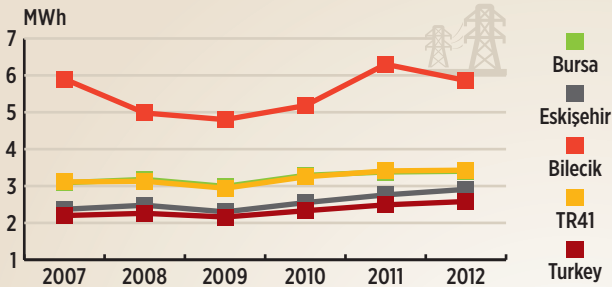


NUMBER OF TRACTORS

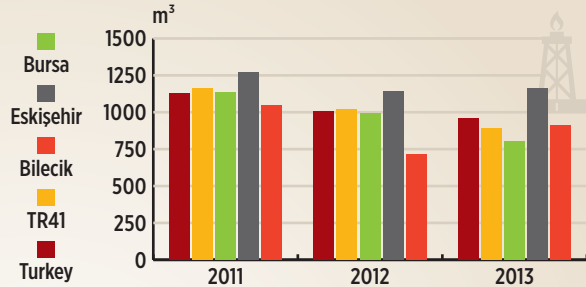
PER THOUSAND HECTARES OF
AGRICULTURAL LAND
OPERATED IS
BURSA'S

13. ENERGY

NET ELECTRICITY CONSUMPTION PER CAPITA



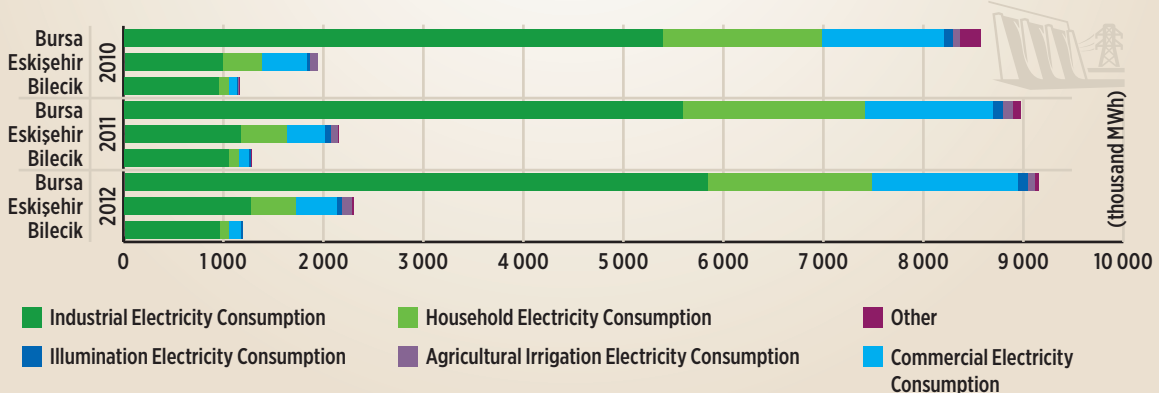
NATURAL GAS CONSUMPTION PER HOUSEHOLD SUBSCRIPTION



Energy is an important input for human and economic activities. 6,49% of the electricity consumed in Turkey in 2012 belongs to TR41 Region. 63,9% of the electricity consumed in the Region is industrial electricity consumption. By consuming 80,19% of its total electricity in industry, Bilecik has a higher percentage of industrial electricity consumption than Bursa (%63,87) and Eskişehir (%55,46).

In natural gas consumption in 2013, 9,73% of the residential natural gas consumption belongs to TR41 Region. Where residential natural gas consumption in Bursa is 585 million m³, in Eskişehir 266,3 million m³ and in Bilecik 30,6 million m³ natural gas has been consumed by the residential premises.

ELECTRICITY CONSUMPTION BY SECTORS 2010-2012

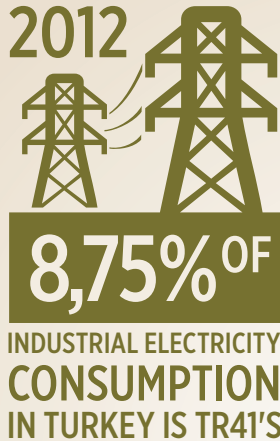


TR41

KEY FIGURES

2013

Source: TEDAŞ, EPDK and BEBKA calculations



2012 THE HIGHEST
INDUSTRIAL ELECTRICITY
CONSUMPTION
PER CAPITA IS



2013

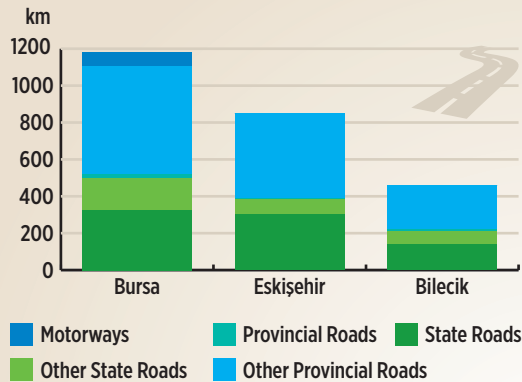


RESIDENTIAL
NATURAL GAS
CONSUMPTION OF
TURKEY IS TR41'S



14. TRANSPORTATION AND COMMUNICATION

2013 ROAD LENGTHS

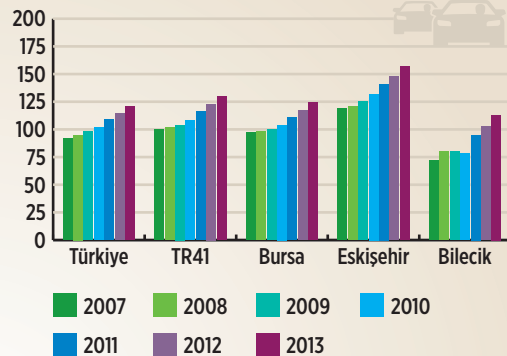


Being the region where provinces of Ankara, İstanbul and İzmir are connected by transportation networks, TR41 Region is hosting important roadway and railway transportation projects. By year 2013, 3,79% of total of state, provincial roads and motorways of Turkey is in TR41 Region. 2013 road intensity (road length per thousand km²) is 421 km for TR41, 478 km for Bursa, 344 km for Eskişehir and 535 km for Bilecik.

NUMBER OF MOBILE SUBSCRIPTIONS PER THOUSAND PERSONS

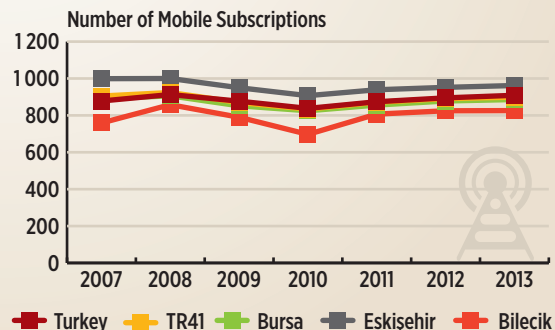
Number of mobile subscriptions per thousand people in TR41 Region is the highest for Eskişehir for years 2007-2013. 2013 number of broadband internet subscriptions per thousand people is 450 for TR41, 448 for Bursa, 468 for Eskişehir and 400 for Bilecik.

NUMBER OF AUTOMOBILES PER THOUSAND PERSONS



Number of automobiles per thousand people for TR41 Region, of which population intensity is high, is above the figure for Turkey.

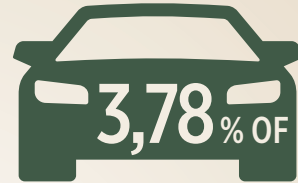
There exists two airports in the Region, namely Bursa Yenişehir and Eskişehir Anadolu Airports.



2013 THE HIGHEST
ROAD INTENSITY IS
BİLECİK'S



YEAR 2013



STATE, PROVINCIAL
ROADS AND
MOTORWAYS
IS IN TR41 REGION

YEAR 2013 THE HIGHEST
NUMBER OF
MOBILE
SUBSCRIPTIONS
PER THOUSAND
PERSONS IS



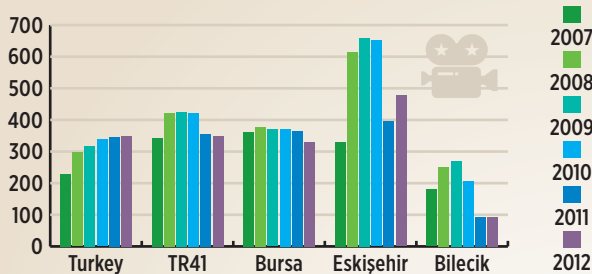
ESKİŞEHİR'S

YEAR 2013 THE HIGHEST
NUMBER OF
BROADBAND
INTERNET
SUBSCRIPTIONS
PER THOUSAND PERSONS IS

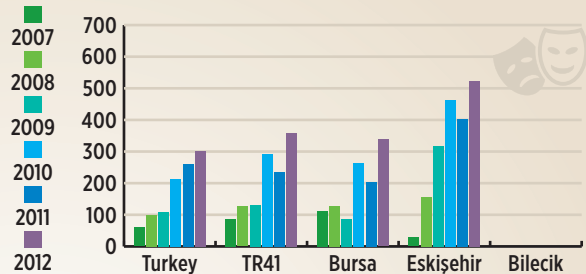


ESKİŞEHİR'S

NUMBER OF CINEMA SEATS PER HUNDRED THOUSAND PERSONS



NUMBER OF THEATER SEATS PER HUNDRED THOUSAND PERSONS



Related to public cultural areas of cinema and theatre, number of cinema seats per 100 000 people and number of theatre seats per 100 000 people for TR41 Region are over those figures for Turkey. In 2013, Eskişehir stands out with 477 cinema seats per 100 000 people and 338 theatre seats per 100 000 people.

NUMBER OF PUBLIC LIBRARY USERS PER THOUSAND PERSONS

	Turkey	TR41	Bursa	Eskişehir	Bilecik
2007	287	185	166	217	291
2008	266	187	148	266	379
2009	275	198	128	371	443
2010	262	192	107	393	497
2011	252	191	109	364	607
2012	258	193	110	382	562

The number of public library users per thousand persons in TR41 Region is below Turkey's figure and it is the highest for Bilecik with 562 users. Together with Bilecik, Eskişehir has also higher figure than Turkey with its 338 public library users per thousand persons.

NUMBER OF VISITORS FOR MUSEUM AND RUINS PER HUNDRED THOUSAND PERSONS

	Turkey	TR41	Bursa	Eskişehir	Bilecik
2012	38 057	8 620	9 944	4 555	6 904

TR41 Region is a region rich of cultural heritages due to its role in different periods of the history. Regarding visitors of museum and ruins, number of visitors for museum and ruins per 100 000 people is the highest in the Region for Bursa with 9 944 visitors.

THE HIGHEST NUMBER OF
THEATRE SEATS
PER HUNDRED
THOUSAND PEOPLE IS
ESKİŞEHİR'S



THE HIGHEST NUMBER OF
CINEMA SEATS
PER HUNDRED THOUSAND
PEOPLE IS



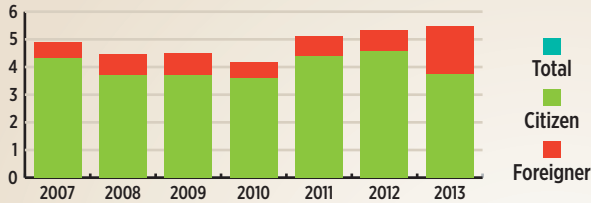
THE HIGHEST NUMBER OF
PUBLIC LIBRARY USERS
PER THOUSAND PEOPLE IS



THE HIGHEST NUMBER OF
VISITORS FOR
MUSEUM AND RUINS
PER HUNDRED THOUSAND
PEOPLE IS BURSA'S

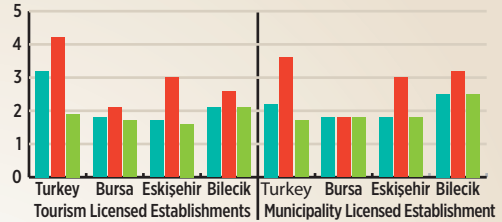


TR41 SHARE OF REGISTRATIONS TO ACCOMODATION ESTABLISHMENTS IN TURKEY (%)



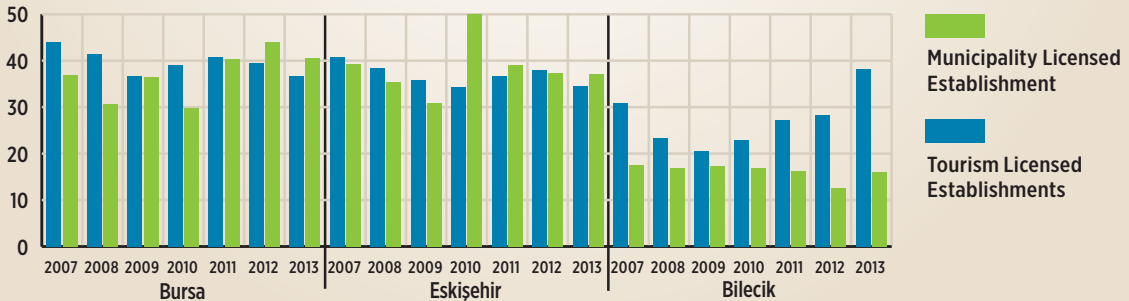
TR41 Region is a region that is hosting tourists with its tourism variety in four seasons. Beside the culture tourism that is important in all three provinces, Bursa is hosting foreign tourists with its mountain/winter tourism where domestic tourism is advancing in Eskişehir with its transportation means and in Bilecik with its historical features.

2013 AVERAGE LENGTH OF STAY IN ACCOMODATION ESTABLISHMENTS (DAY)



In the provinces of the Region, the number of registration to accommodation establishments is increasing in years. In the region, 73,6% of the people registering to the accommodation establishments is in Bursa, 23% in Eskişehir and 3,4% is in Bilecik. Bursa, province where 92,4% of foreign visitors of region are accommodating, stands out with its foreign visitors.

OCCUPANCY RATE IN MUNICIPALITY AND TOURISM LICENSED ACCOMODATION ESTABLISHMENTS (%)



2013 THE HIGHEST
OCCUPANCY
RATE OF
MUNICIPALITY
LICENSED
ESTABLISHMENTS
IS BURSA'S
40,6%



2013 THE HIGHEST
AVERAGE LENGTH
OF STAY OF
FOREIGN
VISITORS IS

ESKIŞEHİR'S
3 DAYS

YEAR 2013



OF FOREIGN VISITORS
REGISTERED IN TR41
ACCOMMODATION
ESTABLISHMENTS
IS IN BURSA

YEAR 2013
TR41'S
SHARE OF
REGISTRATIONS TO
TR41 ACCOMMODATION
ESTABLISHMENTS
IN TURKEY



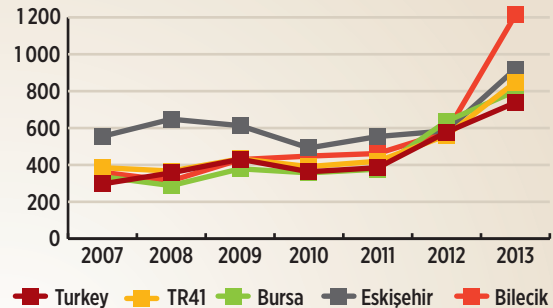
2013 NUMBER OF SPORTS CLUBS BY TYPE OF SPORTS

	TOTAL	Military	Specialised	Establishment	School	Youth Sports Club
Turkey	12 411	11	562	1179	1 354	9 305
TR41	660	2	23	42	39	554
Bursa	457	1	12	4	23	417
Eskişehir	155	1	6	27	15	106
Bilecik	48	-	5	11	1	31

In 2014-2015 season, TR41 Region has two of total 18 football teams of Turkey Super League as Bursaspor and Eskişehirspor.

By year 2013, 660 sports clubs that are in the Region correspond 5,32% of total sports clubs in Turkey. 69,24% of the sports clubs of the Region is in Bursa.

NUMBER OF ACTIVE SPORTSMEN PER HUNDRED THOUSAND PERSONS



Among TR41 provinces, Bursa is the leading province with its numbers of sport clubs, licensed and active sportsmen. Nevertheless, Eskişehir with its number of licensed sportsmen per 100 000 people (5 409) and Bilecik with its number of active sportsmen per 100 000 people (1 213) stand out in the Region. Also, 6,64% of amateur footballers in Turkey is in TR41 Region (By June 2014, 13 497 amateur footballers) and mostly in Bursa.

NUMBER OF SPORTSMEN

	2013 Number of Active Sportsmen					2013 Number of Licensed Sportsmen				
	Turkey	TR41	Bursa	Eskişehir	Bilecik	Turkey	TR41	Bursa	Eskişehir	Bilecik
Female	196 942	11 169	7 261	2 948	960	846 881	45 766	26 048	15 694	4 024
Male	369 111	20 660	14 674	4 413	1 573	1 970 800	115 027	80 472	27 565	6 990
Total	566 053	31 829	21 935	7 361	2 533	2 817 681	160 793	106 520	43 259	11 014



2013 THE HIGHEST NUMBER OF ACTIVE SPORTSMEN PER HUNDRED THOUSAND PERSONS IS BİLECİK'S



REFERENCES

- Information and Communication Technologies Authority (BTİK)
- Ministry of Science, Industry and Technology- General Directorate of Science and Technology
- Ministry of Environment and Urbanisation
- Energy Market Regulatory Authority (EPDK)
- Provincial Directorates of Culture and Tourism (Bursa, Eskişehir, Bilecik)
- General Directorate of Motorways (KGM)
- Ministry of Culture and Tourism- Accommodation Statistics
- General Directorate of Meteorology (MGM)
- Ministry of National Education- Formal Education Statistics
- General Directorate of Sports (SGM)
- The World Bank Data- Indicators (<http://data.worldbank.org/indicator>)
- The Banks Association of Turkey (TBB)
- Turkey Electricity Distribution Corporation (TEDAŞ)
- Turkish Medicines and Medical Devices Agency
- Turkish Statistical Institute (TÜİK- TurkStat) Address Based Population Registration System Database
- Turkish Statistical Institute (TÜİK- TurkStat) Regional Accounts
- Turkish Statistical Institute (TÜİK- TurkStat) Regional Statistics Database
- Turkish Statistical Institute (TÜİK- TurkStat) Environmental Statistics Database
- Turkish Statistical Institute (TÜİK- TurkStat) Foreign Trade Statistics Database
- Turkish Statistical Institute (TÜİK- TurkStat) Birth Statistics Database
- Turkish Statistical Institute (TÜİK- TurkStat) Labour Force Statistics Database
- Turkish Patent Institute (TPE)
- Turkish Statistical Institute (TÜİK- TurkStat) Transportation and Communication Statistics Database

ABBREVIATIONS

ADNKS	Address Based Population Registration System
BTİK	Information Technologies and Communication
ÇSB	Ministry of Environment and Urbanisation
EPDK	Energy Market Regulatory Authority
GSKD	Gross Added Value
KGM	General Directorate of Motorways
KTB	Ministry of Culture and Tourism
MEB	Ministry of National Education
MGM	General Directorate of Meteorology
SGM	General Directorate of Sports
TBB	The Banks Association of Turkey
TEDAŞ	Turkey Electricity Distribution Corporation
TİTCK	Turkish Medicines and Medical Devices Agency
TPE	Turkish Patent Institute
TÜİK	Turkish Statistical Institute
TL	Turkish Liras

DEFINITIONS

Population Growth Rate: It is the population increase per 1 000 population per year in the period between two years.

Median Age: The age of the person in the middle when all the persons in the population are ranked in ascending order.

Old Dependency Ratio: The number of persons at the age of 65 and over per 100 persons in the age group of 15-64.

Young Dependency Ratio: The number of persons in the age group of 0-14 per 100 persons in the age group of 15-64.

Net Migration Rate: It is the number of net migration (difference between immigration and outmigration for a specific area) per thousand persons who are able to migrate.

Infant Mortality rate: It is the number of deaths of infants under one year of age per 1 000 live births in a given year.

Crude Birth Rate: The number of live births per 1 000 population in a given year.

Literacy Rate: It is the number of people who can both read and write divided by the total population. The number of people of which literacy status unknown is excluded in the calculations.

Net Enrolment Ratio: It is obtained by dividing the number of students of a theoretical age group enrolled in a specific level of education by the population in that age group.

Regional Gross Value Added (GVA): It is a value which is equal to the sum of the values of all goods and services produced by resident local units engaged in domestic production activities in a region in a given period of time less the total inputs which are used in the production of these goods and services.

Non-institutional Working Age Population: It is the population at the age of 15 years and over within the non-institutional civilian population.

Labour Force Participation Rate: It is the ratio of the labour force to non-institutional working age population.

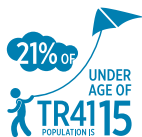
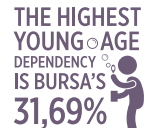
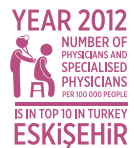
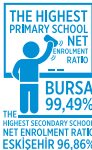
Employment Rate: It is the ratio of employed persons to the non-institutional working age population.

Unemployment Rate: It is the ratio of unemployed persons to the labour force.

TR41

KEY FIGURES

2013

TR41 POPULATION
GROWTH
RATE ISTR41 POPULATION IS
4,89%
OF TURKEY
POPULATION21% OF
UNDER AGE OF
TR41 IS
POPULATION9% OF
REGION'S POPULATION IS
OVER AGE OF
65THE HIGHEST OLD
AGE DEPENDENCY IS
BILECIK'S
14,71%THE HIGHEST
YOUNG AGE
DEPENDENCY
IS BURSA'S
31,69%YEARS 2007-2013
CONTINUOUSLY
INCREASING
POPULATIONS
BURSA AND ESKİŞEHİRTHE GREATEST SHARE IN
POPULATION OF TR41 IS34,6
THE HIGHEST
MEDIAN AGE IS
ESKİŞEHİR'S72%
THE HIGHEST
POPULATION
SHARE OF
15-64 AGE GROUP IS
ESKİŞEHİR'S2008-2013
YOUNG
AGE
DEPENDENCY OF
TR41 REGION AND
TURKEY INCREASED2008-2013
OLD AGE
DEPENDENCY OF
TR41
REGION AND
TURKEY
DECREASEDNET
MIGRATION
RATE OF REGION
5,45%THE HIGHEST
NET MIGRATION
RATE IS
6,98%
ESKİŞEHİR'STR41'S
LITERACY
RATE
IS OVER TURKEY'S
FOR 2013
96,98%THE NUMBER OF
PEOPLE HAVING
MINIMUM HIGHER
EDUCATION
DEGREE
ESKİŞEHİR
IS 2ND IN 81
PROVINCES
164YEAR 2012
NUMBER OF HOSPITAL BEDS
PER 100 000 PEOPLE
RANKS
7TH
IN TURKEY ESKİŞEHİRYEAR 2012
NUMBER OF
PHYSICIANS AND
SPECIALISED
PHYSICIANS
PER 100 000 PEOPLE
IS IN TOP 10 IN TURKEY
ESKİŞEHİRTHE HIGHEST
CRUDE
BIRTH
RATE IS
BURSA'S
15,1%2012 THE LOWEST
INFANT MORTALITY
RATE IS
BURSA'S
8,52THE HIGHEST
PRIMARY SCHOOL
NET
ENROLMENT
RATIO
BURSA
99,49%
THE HIGHEST SECONDARY SCHOOL
NET ENROLMENT RATIO
ESKİŞEHİR 96,86%THE LOWEST NUMBER OF
STUDENTS
PER TEACHER
FOR PRIMARY SCHOOLS
IS ESKİŞEHİR'S
152007-2012 TR41
NUMBER OF NURSES
PER 100 000 PEOPLE
RANKS 11.
AMONG REGIONSYEAR 2012 TR41
NUMBER OF
PHYSICIANS
PER 100 000 PEOPLE
RANKS 4THYEAR 2011 TR41
REGION
GVA
PER CAPITA
\$ 11 528YEAR 2011
SHARE OF INDUSTRY
IN GVA OF
TR41 REGION
IS 39,8%8,7%
TURKEY'S
EXPORT IS FROM
TR41 REGION92%
OF VOLUME OF FOREIGN
TRADE OF
TR41 REGION IS
BURSA'SYEAR 2013
THE HIGHEST BANK
CREDIT PER CAPITA
IS BURSA'S
10 741 TLYEAR 2013
THE HIGHEST BANK
DEPOSIT PER CAPITA IS
ESKİŞEHİR'S
8 794 TL2011 SHARE OF
TR41 REGION'S
GVA
IN TURKEY IS
6,39
%YEAR 2011
TR41 REGION
GVA
RANKS
ON 4THEXPORT
PER CAPITA IS
THE HIGHEST
FOR BURSA
\$ 4 478IMPORT
PER CAPITA IS
THE LOWEST
FOR ESKİŞEHİR
\$ 876YEARS 2007-2013
THE LOWEST
CREDIT/DEPOSIT RATIO IS
ESKİŞEHİR'S2007-2013
TR41 REGION
BANK
CREDITS
QUADRUPLED

YEAR 2013
THE HIGHEST
EMPLOYMENT
RATE IS
BILECIK'S
48,2%



YEAR 2013
THE HIGHEST
LABOUR FORCE
PARTICIPATION
RATE IS BILECIK'S
51,6%



19% OF
TURKEY'S
ACTIVE
R&D
CENTRES
IS IN TR41 REGION



9%
OF INDUSTRIAL
DESIGN AND
UTILITY MODEL
APPLICATIONS
ARE FROM
TR41 REGION



YEAR 2012
PROPORTION
OF WASTE
DISPOSED OF IN
SANITARY LANDFILL
AREAS IS
82%



4,9% OF
TURKEY'S FOREST
AREA IS IN
TR41 REGION



YEAR 2013 TR41 REGION
UNEMPLOYMENT
RATE IS BELOW
TURKEY'S
7%



YEAR 2013 SHARE OF
INDUSTRY IN
EMPLOYMENT
OF THE REGION
IS
40,5%



IN YEAR 2013
IN 81 PROVINCES
BURSA RANKS
3RD
WITH
316
PATENT APPLICATIONS



IN YEAR 2013
IN 81 PROVINCES
BURSA RANKS
4TH
WITH
3940
TRADEMARK
APPLICATIONS



YEAR 2012 THE LOWEST
AMOUNT OF
DRINKING
WATER
ABSTRACTED
PER CAPITA IS
BURSA'S
143 LITRES



IN TR41
THE LOWEST
AVERAGE VALUES
SO₂ AND PM₁₀
IN THE AIR IS
ESKIŞEHİR'S



THE HIGHEST
AGRICULTURAL
PRODUCTION
VALUE IS BURSA'S
3885 TL



THE HIGHEST
CROP PRODUCTION
VALUE PER CAPITA IS
BILECIK'S
2 303 TL



2012
8,75% OF
INDUSTRIAL ELECTRICITY
CONSUMPTION
IN TURKEY IS TR41'S



2012 THE HIGHEST
INDUSTRIAL ELECTRICITY
CONSUMPTION
PER CAPITA IS
BILECIK'S
1 938 MWH



2013 THE HIGHEST
ROAD INTENSITY IS
BILECIK'S
535 KM



YEAR 2013
3,78% OF
STATE, PROVINCIAL
ROADS AND
MOTORWAYS
IS IN TR41 REGION



THE HIGHEST
ANIMAL PRODUCTION
VALUE PER CAPITA IS
ESKIŞEHİR'S
266 TL



THE HIGHEST
213
NUMBER OF TRACTORS
PER THOUSAND HECTARES OF
AGRICULTURAL LAND
OPERATED IS
BURSA'S



2013
9,73% OF
RESIDENTIAL
NATURAL GAS
CONSUMPTION OF
TURKEY IS TR41'S



2013 THE HIGHEST
NATURAL GAS
CONSUMPTION
PER RESIDENTIAL
NATURAL GAS
SUBSCRIBER IS
ESKIŞEHİR'S
1161 m³



YEAR 2013 THE HIGHEST
NUMBER OF
MOBILE
SUBSCRIPTIONS
PER THOUSAND
PERSONS IS
ESKIŞEHİR'S
962



YEAR 2013 THE HIGHEST
NUMBER OF BROADBAND
INTERNET
SUBSCRIPTIONS
PER THOUSAND PERSONS IS
ESKIŞEHİR'S
468



THE HIGHEST NUMBER OF
THEATRE SEATS
PER HUNDRED
THOUSAND PEOPLE IS
ESKIŞEHİR'S
338



THE HIGHEST NUMBER OF
CINEMA SEATS
PER HUNDRED THOUSAND
PEOPLE IS
ESKIŞEHİR'S
477



2012 THE HIGHEST
OCCUPANCY
RATE OF
MUNICIPALITY
LICENSED
ESTABLISHMENTS
IS BURSA'S
40,6%



2013 THE HIGHEST
AVERAGE LENGTH
OF STAY OF
FOREIGN
VISITORS IS
ESKIŞEHİR'S
3 DAYS



YEAR 2013
5,3%
OF SPORT CLUBS
IS IN TR41
REGION



TR41 REGION NUMBER OF
FOOTBALL TEAMS
IN SUPER LEAGUE
IS
2



THE HIGHEST NUMBER OF
PUBLIC LIBRARY USERS
PER THOUSAND PEOPLE IS
BILECIK'S 562



THE HIGHEST NUMBER OF
VISITORS FOR
MUSEUM AND RUINS
PER HUNDRED THOUSAND
PEOPLE IS BURSA'S
9 944



YEAR 2013
92,4%
OF FOREIGN VISITORS
REGISTERED IN TR41
ACCOMMODATION
ESTABLISHMENTS
IS IN BURSA



YEAR 2013
TR41'S
SHARE OF
REGISTRATIONS TO
TR41 ACCOMMODATION
ESTABLISHMENTS
IN TURKEY
5,5%



YEAR 2013
5,62
% OF
ACTIVE SPORTSMEN IS
IN TR41 REGION



2013 THE HIGHEST
NUMBER OF
ACTIVE SPORTSMEN
PER HUNDRED
THOUSAND PERSONS
IS BILECIK'S
1 213

